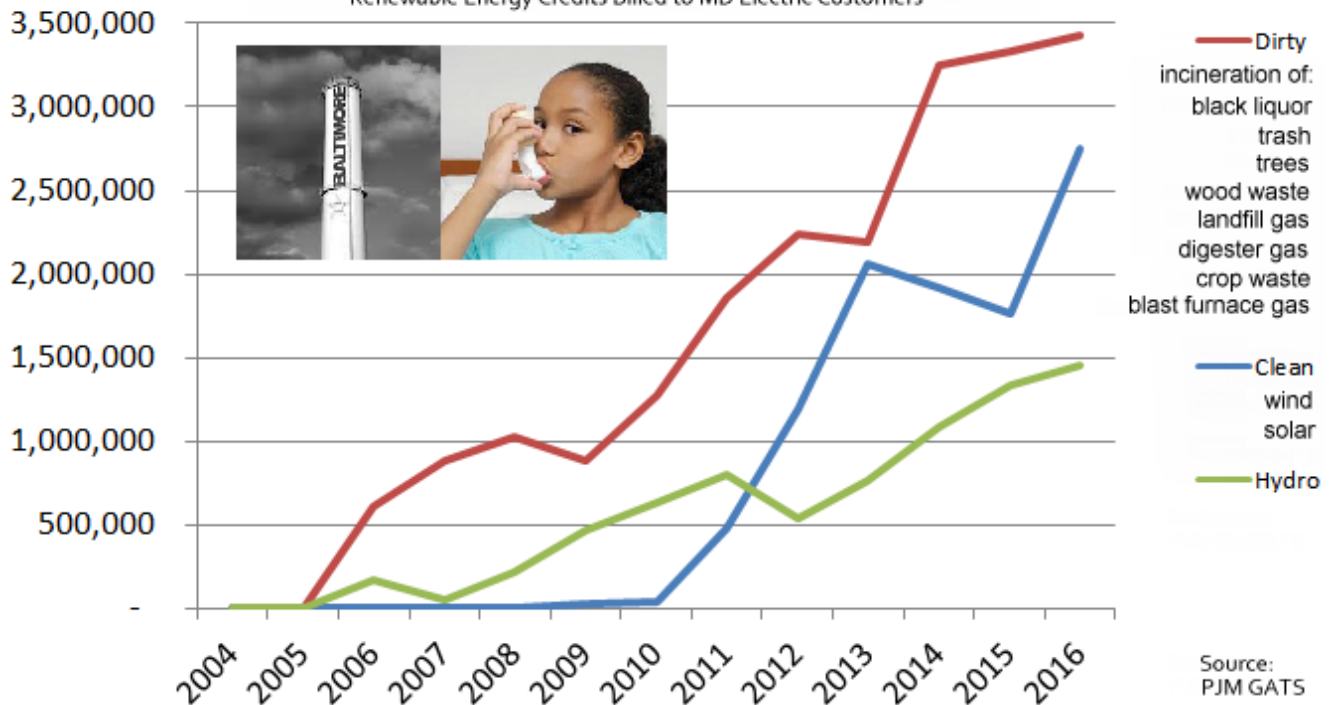


Why is Maryland's "renewable" energy coming from smokestacks??

Tier I Renewable Energy in Maryland

Renewable Energy Credits Billed to MD Electric Customers



Maryland's Renewable Portfolio Standard (RPS) is one of the dirtiest in the nation. From 2006 through 2015, Maryland ratepayers have paid \$125 million to subsidize polluting energy sources such as paper mills, trash incinerators, tree burners, and landfills, as dirty energy has made up the majority of our renewable energy mix. In 2015, this amount was \$47 million and it keeps rising.

A better way to grow wind & solar... *Since dirty energy is nearly half of the mandated renewable energy mix in recent years, removing these sources doubles the space for wind, solar and hydro.**

The Energy Justice approach, which cuts out 97% of the combustion sources from the RPS:

- 1) Immediately limit eligibility of combustion sources to those facilities currently in the RPS.
- 2) Make trash incineration and refuse-derived fuel credits ineligible by 2019.
- 3) Make out-of-state combustion sources ineligible by 2020.

Those who propose doubling the RPS goal risk a continued growth of subsidies to dirty energy sources. Maintaining annual dirty energy subsidies helps keep these facilities open, such as Maryland's remaining trash incinerators that we're organizing to close.

* Note that the RPS has pointlessly thrown over \$84 million at subsidizing decades-old hydroelectric dams that are not new or expanding, and are not at risk of closure. If hydro weren't flooding the RPS with cheap and pointless credits, and dirty energy were removed, wind and solar (currently at 36% of the RPS pie) could nearly triple without even increasing the RPS target percentage.

Why subsidize dirty energy sources in Maryland? ...and especially why subsidize those in other states??

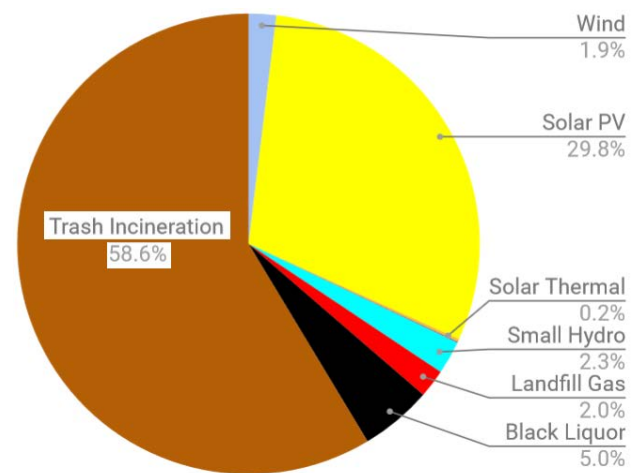
77% of the “Tier I” dirty energy has been coming from out of state, from as far as Wisconsin, Illinois and Tennessee.

59% of the “Tier I” renewable energy serving Maryland that is actually produced IN the state of Maryland comes from the state’s two trash incinerators – sources dirtier than coal burning.

Where Maryland’s renewable energy mix came from in 2016:

Source	In-State	Out-of-State
Wind:	1%	99%
Solar:	100%	0%
Geothermal:	100%	0%
Hydroelectric dams:	2%	98%
Biomass incineration (wood):	0%	100%
Biomass incineration (crops):	0%	100%
Black Liquor burning (paper mills):	4%	96%
Landfill Gas Burning:	34%	66%
Trash incineration:	73%	27%
Anaerobic digester gas:	0%	100%
TOTAL:	18%	82%

In-State “Renewable” Energy supported by MD RPS in 2016:



Dirty energy in Tier 1 of Maryland’s Renewable Energy Mix:

